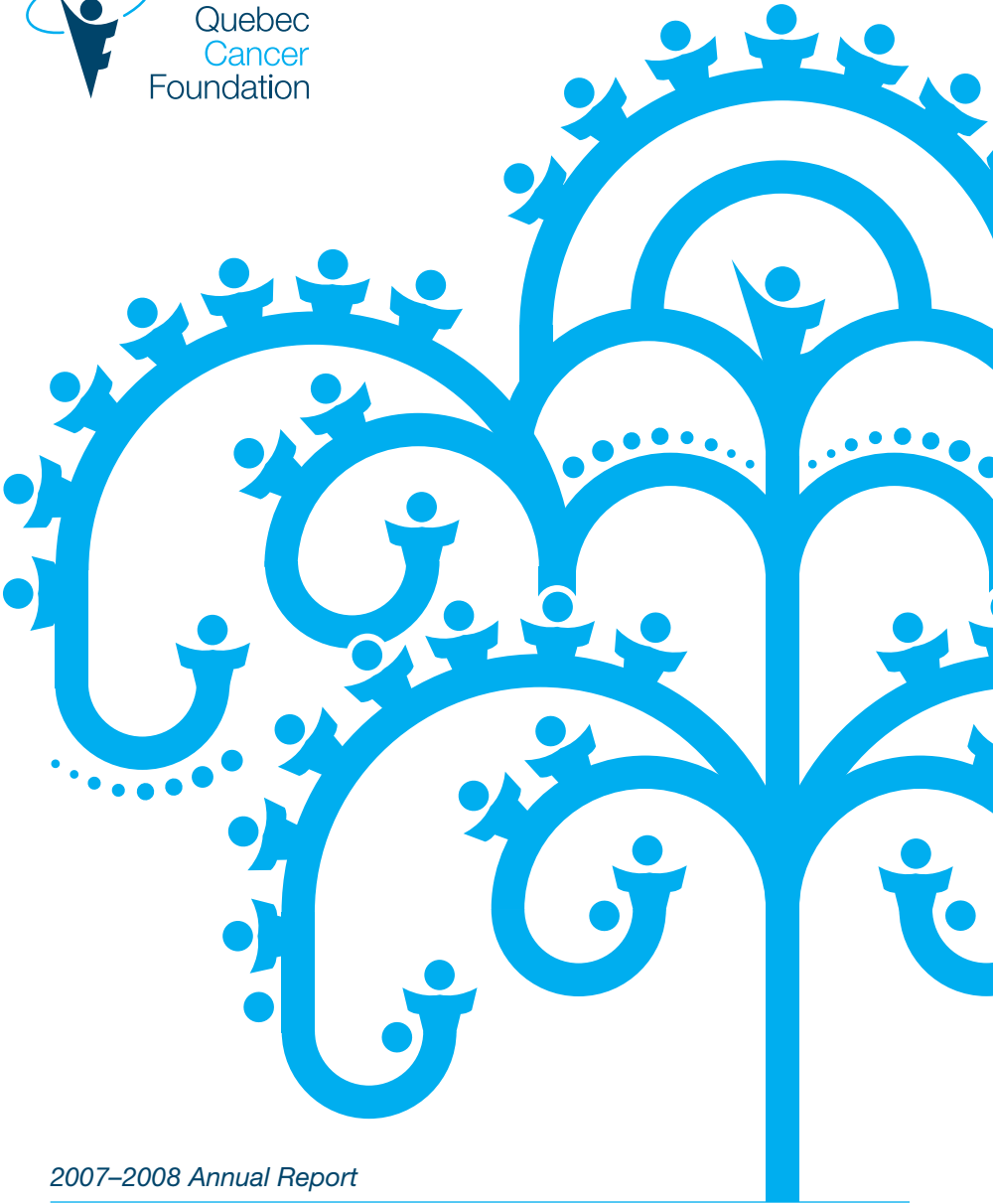




Quebec
Cancer
Foundation



2007–2008 Annual Report

Rooted for growth



Table of contents

Our mission	1
2007-2008 at a glance	2
Message from the Chair of the Board and the Executive Vice-President	4
Development branch	7
Communications branch	12
Foundation services	14
Financial report	20
A gesture for life	24
The Board of Directors and Senior Management	28
Addresses	29



Our mission

To improve the quality of life of people with cancer and their loved ones.

Our vision

A recognized, credible and influential organization that concretely improves, through its information, support and lodging services, the quality of life of people with cancer.

Our values

Collegiality /	Integrity /
Respect /	Commitment /
Innovation /	Accountability /
Professionalism /	Leadership /

A few statistics that speak volumes!



Inform

Over **1,500 calls** to the **Info-Cancer Line**.

More than **2,000 documents** lent and over **45,000 brochures** distributed by the **Documentation Centre**.

Some **56,000 hits on our Website**, for a total of **97,000 pages viewed**.

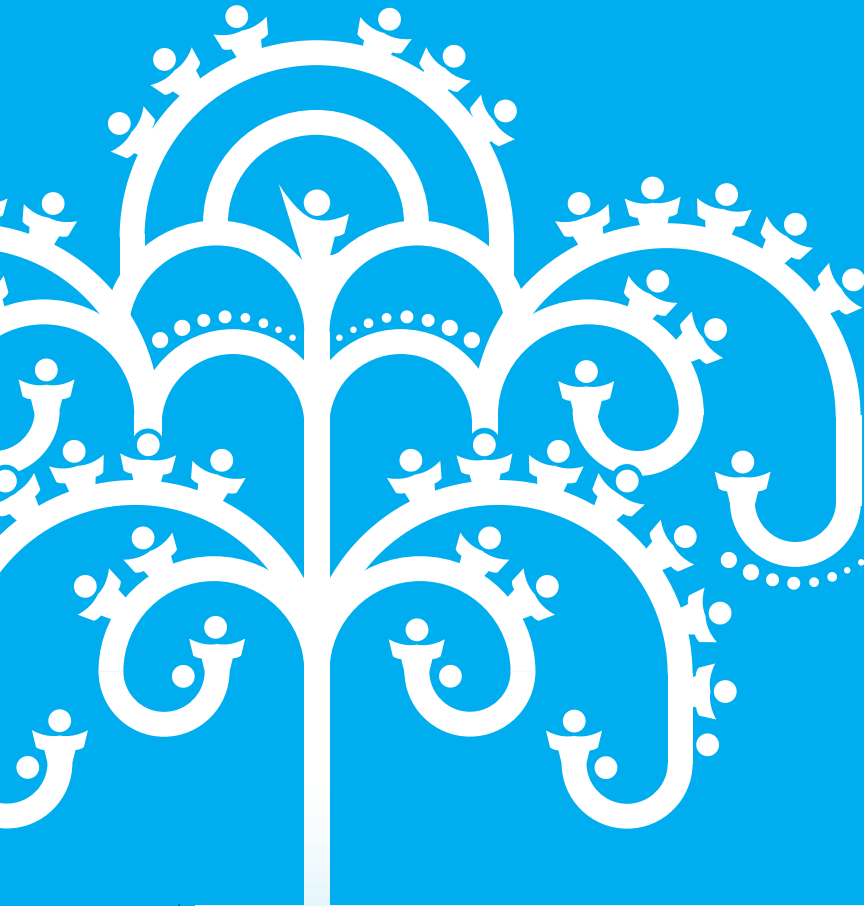
Accompany

Over **100 peer matches** through our **Telephone Peer Support Program**.

People living with cancer participated in the Foundation's **complementary therapies and activities 11,836 times**.

Lodge

In 2007-2008, over **3,000 people** stayed in our **Lodges**, bringing the total number of residents to **30,000** since 1988.



Thanks to you!

More than **75,800 donors**.

\$1,807,134 generated by our **direct mail campaign**.

\$147,521 raised through our second **corporate solicitation campaign**.

\$96,825 generated by the **Nutri-sac fundraising activity**.

\$311 924 raised through the **planned giving program**.

A network of over **550 volunteers** that allows us to offer a wide array of **high-quality services** across Quebec.

Message from the Chair of the Board and the Executive Vice-President

Since 1979, the Quebec Cancer Foundation has been rooted not only in the community but also in the health network, which, day after day, refers to us hundreds of people living with cancer. To help them better cope with cancer, these people are in real need of support and compassion, not to mention information and lodging. **Because cancer also means life.**

Over the years, the Foundation has expanded the range of services it offers, while maintaining strong roots able to support future growth. For the past thirty years, the Foundation has remained firmly grounded in Montreal, yet also branching out with the inauguration of Regional Centres in Sherbrooke, Quebec City, Gatineau and Trois-Rivières.

And this is only the beginning! After all these years, the Foundation is flourishing more than ever, its buds bursting with new vigour, new colour. In 2007–2008, activities bore fruit, bringing a host of new projects, while the actions of previous years continued to prove their worth.

For example, for the first time ever, the Foundation hosted a major benefit evening in Montreal and Sherbrooke. These Prestige Events generated a prodigious \$223,301 and helped the Foundation build even more bridges with the business community. Chaired by Charles Sirois and Louis Lagassé respectively, the galas also drew on the support of Dr. Richard Béliveau, who served as honorary chair. Both occasions were memorable ones, meaning, we believe, that the Foundation has earned a special spot in the hearts of business men and women.



For a second year, the Foundation conducted a corporate campaign among small and medium businesses in Quebec. This latest edition built on the progress made last year and confirmed that such a fundraising initiative is a truly worthwhile endeavour for the Foundation. In addition to promoting our mission among business leaders in communities where our Regional Centres and Lodges can be found, the campaign helped us to raise \$147,521.

The above fundraising activities, combined with our planned giving and direct mail programs, allowed the Foundation to reach a significant goal in 2007–2008. In fact, we were able to finish repaying our entire loan of nearly \$4 million, borrowed in 2005 to expand our network of Lodges. We take enormous pride in the fact that development objectives are always pursued with utmost concern for optimizing our resources. Thus it was in 2007–2008 that the Foundation dug its roots deeper in order to reinforce its development.

This year, the Quebec Cancer Foundation generated revenues of \$5,523,704*. These results were only made possible thanks to the support of thousands of donors, who strongly believe in the Foundation's mission and its worth to the community. Your help is crucial and we are extremely grateful for it.

Every year, the Foundation is proud of the progress made and the efforts of both board members and employees, mainstays to our growth. Vital too are the contributions of volunteers, standing with us to ensure our future success. We sincerely thank our hundreds of volunteers for their dedication and for helping us stay attuned to people living with cancer and their loved ones.

The coming years will be full and productive and we are convinced that the energy expended in recent years will propel the Quebec Cancer Foundation forward.



A handwritten signature in black ink, appearing to read 'Michel Gélinas'.

D' Michel Gélinas
Chair and Co-Founder



A handwritten signature in black ink, appearing to read 'Daniel Cauchon'.

Daniel Cauchon
Executive Vice-President

**Includes deferred contributions of \$398,480, endowment income of \$4,171, \$49,173 in reclassified revenues and \$5,071,880 in revenues.*



Development Branch

Development

Solicitation – Direct mail campaign

Every year, thousands of Quebecers join the Foundation's cause by responding positively to its direct mail campaign. In 2007–2008, this activity not only generated \$1,807,134 but also attracted 11,025 new donors. A total of 75,814 people helped us reach this phenomenal goal. Thanks to our donors, the Foundation is able to put down even deeper roots within the community, thus continuing to improve the well-being of people with cancer.

Major and planned gifts

The major \$1.4 million gift received in 2006–2007 certainly made the year a memorable one. Yet ongoing efforts are being made in this area, so that the Foundation may continue to reap further rewards from its past actions. In 2007–2008, the Foundation's Planned Giving Committee was proud to announce that revenues from this gift category reached \$311,924.

This success is no doubt the result of the many partnerships established with notaries and other professionals working in fields where it is possible to promote planned giving. To strengthen our relationships with these valuable partners, every year, the Foundation sends them the Dons & Legs Calendar, a helpful awareness-raising tool. This year was no exception, with the November unveiling of the 15th edition of our calendar, featuring the paintings of artist Marius Dubois.

In Memoriam donations

The Quebec Cancer Foundation was touched to see that more than 8,755 people honoured the memory of a loved one through an In Memoriam donation. A total amount of \$428,261 was raised through this program.

Our dedicated spokespersons

Natalie Choquette

Since 2004, Natalie Choquette has lent her voice to the Foundation's mission in order to promote the services available to people living with cancer and their loved ones. But her involvement did not end there. In addition to serving as our spokesperson, the affable Diva announced that she would donate to the Foundation a portion of the proceeds from the sale of her trilogy CD *Æterna* and tickets to her show.

At the launch of her Lux *Æterna* series in November 2007, Ms. Choquette proudly announced that \$30,000 had been raised for the Quebec Cancer Foundation.

The Foundation owes a deep debt of gratitude to this Diva with a heart of gold. How fabulous it is to have her by our side celebrating life with that tireless passion that makes her so unique!

Étienne Boulay

On November 24, 2007, Étienne Boulay of the Montreal Alouettes and spokesperson for the Quebec Cancer Foundation Nutri-sac campaign, captured the Finest Canadian Player award following an Internet poll of football fans by the Canadian Football League. Terry Evanshen, member of the Canadian Football Hall of Fame, presented Mr. Boulay with the award, along with a \$10,000 cheque for a charitable organization of his choosing. The proud spokesperson of our Nutri-sac campaign generously chose to donate the amount to our Foundation.



Fundraising activities

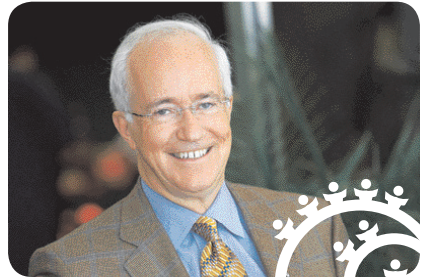
Prestige Event

In 2008, the Prestige Event brought the fragrance of spring to the Foundation – not once, but twice!

For this first edition, the evening's honorary chair, Dr. Richard Béliveau, whisked away guests on a gourmet adventure that was both delectable and healthful! Turmeric, berries and arame kelp titillated taste buds all around, proving that great food and a good cause can make a fine match!

With Chairman and CEO of Tele-system Ltd. Charles Sirois as general chair, the Prestige Event in Montreal drew a crowd of over 300 business men and women on May 26, 2008 at the Cabaret du Casino de Montréal. Thanks to this exceptional turnout, the sum of \$135,043 was raised for the Foundation that evening.

In Sherbrooke, the Prestige Event, hosted by regional chair Louis Lagassé,



M. Louis Lagassé

President of Groupe Lagassé, was another success story. Displaying his customary commitment to the Estrie community, M. Lagassé brought together more than 100 guests at the Sherbrooke Golf Club, raising \$88,257 in the process.

In the end, results from both these major benefit evenings generated \$223,300 for the Foundation.



Mr. Daniel Cauchon, Dr. Richard Béliveau, Dr. Michel Gélinas and Mr. Charles Sirois

Benefit recital

Daniel Lalonde, Vice-President and Consultant for National Bank Financial, served as honorary chair of the 7th benefit recital for the Quebec Cancer Foundation's art-therapy workshops, an event that raised the sum of \$26,660.



The recital showcased the talents of soprano Chantal Lambert and pianist Martin Dubé, who performed a “Cabaret classique,” with actress and host Mireille Deyglun at the helm, brilliantly serving as the evening’s MC.

Corporate campaign

From May to August 2008, some 845 businesses from around Quebec answered our Foundation’s call to action during its second corporate campaign. As a result, over \$147,521 were raised thanks to the generosity of our very own entrepreneurs, who take to heart our cause and mission.

Nutri-sac campaign

From September 6 to November 30, 2007, the Foundation held its traditional nuts and dried fruit sale. This instalment of the Nutri-sac campaign was organized in Montreal, Sherbrooke, Trois-Rivières, Gatineau and Quebec City, bringing in \$96,825.

To promote this fundraising activity, the Foundation drew on the support of Montreal Alouettes’ number 22, Étienne Boulay. Spokesperson for a second year, Mr. Boulay went before the media on several occasions to promote to the public this delicious way to make a difference!



In Estrie, the campaign attracted the support of another passionate spokesperson, André Bolduc, coach of the Vert & Or Université de Sherbrooke football team. Not only did he agree to represent the campaign, he also got his entire football team on board! In partnership with Radio Énergie 106.1 Sherbrooke, the players braved wind and rain, taking to the streets to sell the Nutri-sac pouches to passersby and drivers at the corner of King and Jacques-Cartier in Sherbrooke.



Third-party fundraising events

Every year, hundreds of citizens get involved with our cause by organizing fundraising activities in their communities. Thanks to them, over \$215,417 were raised for the Foundation this year. We salute their commitment and invite others to follow suit!

Here is a sample of the activities organized in various communities in Quebec where the Foundation has a presence:

Estrie and surrounding areas

Throughout the summer, the Equestrian Club in the Acton RCM saddled up for the Randonnée pour une bonne cause on August 7, 2008. Organized in memory of Georgette Desautels and Lionel Perreault, the 22-km ride helped raise \$4,861 for the Foundation.

Mauricie and surrounding areas

The Trois-Rivières organization Accueil féminin pulled out all the stops when it hosted a fashion show benefiting the Foundation. Held at the Hôtel des Gouverneurs in Trois-Rivières on September 5, 2007, the activity attracted more than 300 people and raised the sum of \$3,200.

Montreal and surrounding areas

On June 10, 2008, close to 50 people from the Greater Montreal business community gathered for the multidisciplinary conference entitled *Gérer dans la tourmente*, which addressed the issue of

change and innovation for corporations in the 21st century. Spearheading the event, Germain Decelles, President and Senior Consultant at Web Tech Management, subsequently donated \$5,533 to the Foundation.

Outaouais and surrounding areas

The third President's Golf Tournament of the Société des casinos du Québec (SCQ) took place on Wednesday, September 5, 2007. The annual tournament raised \$25,000 for the Quebec Cancer Foundation.

Quebec City and surrounding areas

Volunteers from the Quebec City Regional Centre organized a golf tournament for the Foundation, generating \$20,496. Held at the Golf St-Michel in St-Michel de Bellechasse on May 30, 2008, this benefit tournament invited some 100 golfers to tee off!

Communications Branch

Communications

In keeping with the updated logo introduced in 2006–2007, the Communications Branch is continuing to upgrade the Foundation's image by developing a brand new visual identity. Designed jointly with the bleu-blancrouge advertising agency, these new images have breathed new life into the Foundation's communications.

Our 2007-2008 year was therefore marked by the blossoming of new communications tools for the Foundation.

L'Écho – The Foundation's newsletter

Published twice a year, this newsletter is our way of thanking our donors and partners by keeping them abreast of the latest news and developments regarding the services offered to people with cancer. Launched in winter 2008, this bulletin is mailed, emailed or available on the Foundation Website.



Posters and brochures

The poster and brochure used to promote Foundation services also underwent a makeover this year.

With a blue background, the poster is aiming for a simple, attention-grabbing style and features the three types of services offered by the Foundation. Distributed throughout the health network, this tool prominently displays the Foundation tree, a symbol that reflects union, support, togetherness and strength. The poster shows the tree in bloom and the figure from our logo, highlighting the compassion and solidarity that exists between people living with cancer and their loved ones.

The Foundation tree can also be seen on the brochure made available to people living with cancer and their loved ones. With more than 40,000 copies distributed yearly, the brochure is a great window into the Foundation's mission.

Foundation video

If a picture is worth a thousand words, then an image with a personal testimony must be worth even more! Developed for the Prestige Event, the Foundation video brings to life for the benefit of our partners and donors the day-to-day reality of the Foundation and those affected by cancer. A few minutes of poignant messages from volunteers, residents and service recipients of the Foundation help viewers to truly understand what our information, support and lodging services mean to those who use them.

Visibility activities

Third-party events, donation announcements, a fundraising campaign, position statements, new services – all these and more are announced through our press releases! In 2007–2008, the Foundation published 65 press releases to publicize our latest news. These contacts with the media enabled us to secure 51 interviews and 171 positive quotes.

To further boost the visibility of its services, the Foundation also attended 31 events for health care professionals and the general public.

Connecting with the community

Initiated by the Foundation, Coalition Priorité Cancer au Québec was born of the spontaneous coming together of not-for-profit organizations dedicated to the cancer issue in Quebec.

As a founding member of this initiative, the Foundation has made a commitment to sensitize decision makers to the reality of people living with cancer and their loved ones and to truly make cancer a top government priority. Through our partnership with this Coalition and with the help of supporters, the Foundation works daily to promote better coordination of cancer care in Quebec.

Posters and brochures



Foundation services

Inform

According to the World Health Organization, soon, one out of two people will be affected by cancer at some point in their life. In light of this unnerving statistic, it is clear to see that information on the subject is greatly needed. Since its inception, the Foundation has believed in the importance of access to information, even making this a priority service offered. The central point for information, the Quebec Cancer Foundation's Regional Centre in Quebec City serves as the main gateway for information on cancer.

Documentation Centre

Always abreast of the latest news in the field of cancer, the Foundation's Documentation Centre responded to 3,088 information requests involving research by documentalists.

In 2007-2008, the Documentation Centre lent 1,804 reference works, distributed 1,896 reference documents and disseminated 44,589 brochures produced by the Foundation.

Info-Cancer Line 1 800 363-0063

In 2007-2008, the Quebec Cancer Foundation Info-Cancer Line received 1,500 calls. A specialized nurse was at the other end of the line providing information, support and reassurance to callers from every corner of Quebec. In addition, our network of Regional Centres and Lodges received more than 45,400 calls during the same time period.

Information portal

The Quebec Cancer Foundation Website is a reference of choice among Quebecers on the subject of cancer. In 2007-2008, our website fqc.qc.ca was consulted approximately 56,000 times by visitors and 97,000 pages were viewed in search of information or to consult cancer-related studies.





Accompany

When in need, it is always good to have a shoulder to lean on, someone ready to listen, answer questions with relevant information and calm our fears. The Foundation's support services aim at filling these needs in an effort to lighten the load of those affected by cancer.

Telephone Peer Support Program

In the past year, the confidential Telephone Peer Support Program has connected people living with cancer to volunteers having experienced the same type of cancer. Once matched, peers can share their experiences, discuss the impact of the illness on their lives and exchange much needed support.

Complementary therapies and additional services

Massage therapy, art therapy, kinesiology and esthetic and hairdressing services: a wide array of activities to help Foundation visitors feel revitalized, energized and relaxed after visiting our organization.

Massage therapy

Available at all Regional Centres, massage therapy services were delivered to people living with cancer to help them rest and relax. In 2007-2008, 439 massage therapy sessions were given by professionals specially trained in massage services for people with cancer.

Art therapy

The Montreal Regional Centre and Lodge received 420 visits for its art-therapy workshops during the year. Participants were allowed the opportunity to give free rein to their creativity and express their emotions and personal experience.

The Estrie Regional Centre and Lodge, in cooperation with the Université du Québec à Trois-Rivières, benefited from the support of a doctoral intern in art therapy, allowing it to offer workshops to nearly 50 people living with cancer.

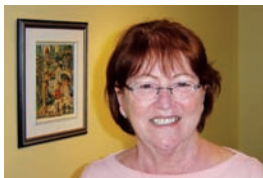
Esthetic and hairdressing services

For a third year, in partnership with the Bel Avenir Professional Training Centre in Trois-Rivières, the Mauricie Regional Centre and Lodge offered free hairdressing and esthetic services to residents, helping them boost their self-confidence.

Free hairdressing was also made available at the Montreal Regional Centre and Lodge, while the Quebec Regional Centre provided wig loan services at a nominal fee.

Kinesiology

In partnership with Université de Sherbrooke, the Estrie Regional Centre and Lodge has welcomed six undergraduate kinesiology students since fall 2005. These interns first developed kinesiology activities for residents of the Lodge and then opened the doors of the Regional Centre to people in this area with cancer. An array of initiatives was developed, including one-on-one counselling, walks



After a long fight with the disease, I visited the Quebec Cancer Foundation, where I was greeted with open arms. I was given the help I needed – at some times it was reassurance, at others moral or physical support. The activities of the Regional Centre gave me the breather I needed to help me go on with my daily life. Now, I tell people who need it, to call upon the services of the Quebec Cancer Foundation. The results can only be good!

Reine White,

participant at the various workshops offered at the Quebec City Regional Centre

and varied fitness sessions like relaxation, Tai chi and exercise ball activities. Conferences on healthy lifestyles and cancer-fighting foods were also held on a regular basis. During winter, snowshoeing excursions were organized jointly with the Atmosphère Boutique in Sherbrooke.

Developed in 2006, the anti-lymphedema workshop, supervised by a kinesiologist, continued to be offered for women touched by breast cancer. The workshop features a series of exercises that promote lymph circulation by moving and stretching the upper limbs. Interest in this activity was constant throughout the year, with participants noting many positive effects, such as greater flexibility, after only a few days of practising the exercises.

Launched in 2008, the Passeport santé was developed by 15 kinesiologists in the region and kinesiology students from Université de Sherbrooke and offers to evaluate the fitness level of clients and provide them with a personalized program. One of the goals of the program was to promote physical activity as part of a healthy lifestyle to prevent cancer.

Other social activities

The Regional Centres and Lodges also offer a wide gamut of social activities to people living with cancer, including coffee get-togethers, various outings, collective cooking, recreational bingo, the “Look Good...Feel Better” workshops and a range of conferences. Moreover, the Montreal Regional Centre and Lodge provides free transportation services to residents for radiation therapy sessions at hospitals of the metropolis. In 2007–2008, 564 return trips were made as part of this initiative.



Accommodation

Lodges

In recent years, the Foundation's network of Regional Centres and Lodges has spread its roots. The Foundation can thus accommodate thousands of people from around the province and requiring treatments in radiation oncology centres.

Now securely grounded in four Quebec municipalities – Montreal, Sherbrooke, Gatineau and Trois-Rivières – the Regional Centres and Lodges of the Foundation offer 126 beds in double rooms, each with its own bathroom. Pleasant and peaceful, these rooms were designed to provide a restful environment but also to help guests break their isolation. All located near radiation oncology centres, the Lodges also feature comfortable lounges that foster exchanges among residents.

*Mauricie Regional
Centre and Lodge*



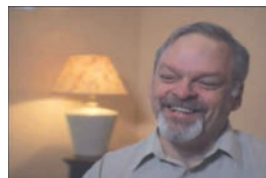
Estrie Regional Centre and Lodge



In 2007–2008, the Lodges of the Quebec Cancer Foundation welcomed 3,024 people touched by cancer. There they found a friendly living space, useful services and warm reassurance throughout their treatment.

Number of people welcomed number of overnight stays:

Regional Centre and Lodge	Nb. of residents	Nb. of stays
Montreal	1 165	9 165
Estrie	993	4 353
Outaouais	445	2 755
Mauricie	421	3 555
Total	3 024	19 828



The Foundation Lodge provided me with a place to stay where I could exchange with others who were experiencing the same difficulties, both physical and emotional. We don't talk about the disease...we help each other, progress together, see the same doctors, undergo pretty much the same treatments, depending on our specific situation, and that contact with someone who knows is really important.

Yvan Lemay, resident, Montreal Regional Centre and Lodge

Montreal Regional Centre and Lodge



Outaouais Regional Centre and Lodge Michael J. McGivney Pavilion



Financial report

This information was drawn from the 2007–2008 financial statements of the Quebec Cancer Foundation as audited by Raymond Chabot Grant Thornton, L.L.P. These are available from the head office upon request.

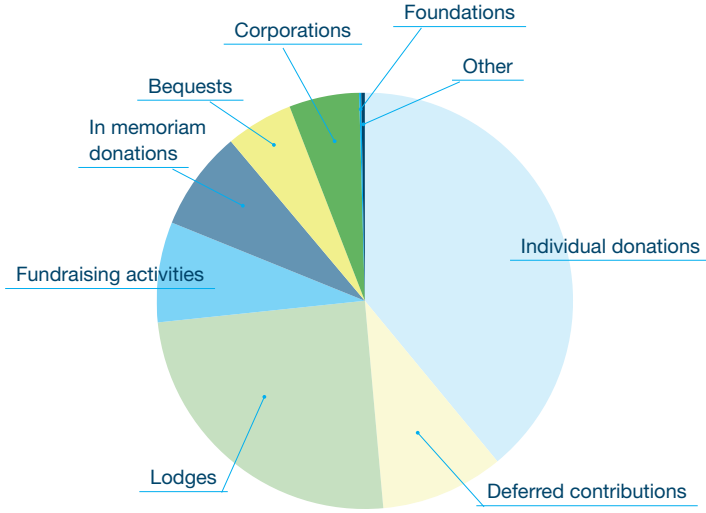
Results for year ended at August 31, 2008

			2008	2007
	General Fonds	Capital fund	Total	Total
	\$	\$	\$	\$
Revenus				
Donations	3,188,379		3,188,379	4,636,849
Activities	412,561		412,561	180,874
	3,600,940	–	3,600,940	4,817,723
Other revenues				
Revenues from services	938,683		938,683	731,839
Subsidy from the Ministère de la Santé et des Services sociaux	360,683	75,350	436,033	492,996
Net revenues from investments	14,255		14,255	16,100
Income from a dispute settlement				163,868
Income on disposal of capital assets		1,041	1,041	
Amortization of deferred contributions		80,928	80,928	69,842
	1,313,621	157,319	1,470,940	1,474,645
	4,914,561	157,319	5,071,880	6,292,368
Expenses				
Donation-related expenses	979,791		979,791	1,065,957
Activity-related expenses	108,444		108,444	82,726
	1,088,235	–	1,088,235	1,148,683
Service expenses	3,118,069		3,118,069	3,296,508
Service development fees	307,949		307,949	204,580
Administrative fees	244,709		244,709	286,508
Financial expenses		9,246	9,246	81,461
Amortization of capital assets		206,832	206,832	209,600
	4,758,962	216,078	4,975,040	5,227,340
Surplus (deficiency) of revenues over expenses	155,599	(58,759)	96,840	1,065,028

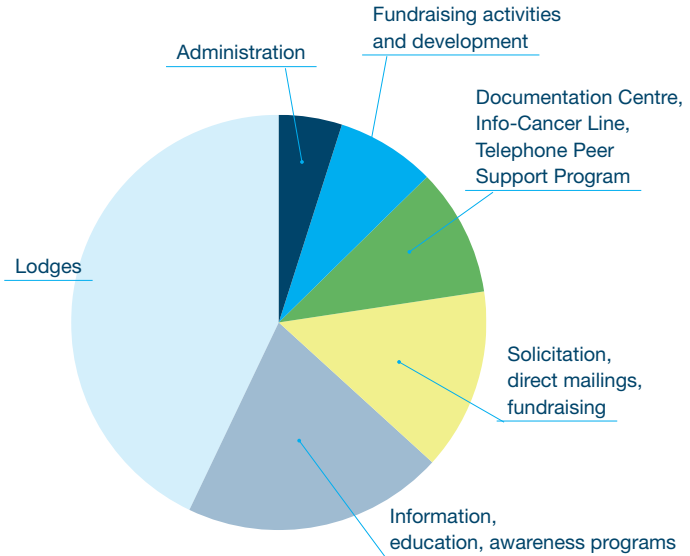
Balance sheet for year ended at August 31, 2008

				2008	2007
	General Fund	Capital Fund	Employee Endowment Fund	Total	Total
	\$	\$	\$	\$	\$
ASSETS					
Current assets					
Cash flow	66,076	16,549	4,171	86,796	215,808
Term deposits, 3.03 % à 3.07 % (3.7 % in 2007), expiring in June and July 2009	325,000			325,000	200,000
Accounts receivable	719,437			719,437	652,873
Supplies for resale	32,466			32,466	22,261
Advances	57,000			57,000	48,965
	1,199,979	16,549	4,171	1,220,699	1,139,907
Investments	266,625			266,625	110,154
Capital assets		7,086,596		7,086,596	7,241,383
	1,466,604	7,103,145	4,171	8,573,920	8,491,444
LIABILITIES					
Current liabilities					
Accounts payable	624,206	113,863		738,069	655,084
Payments on term loans					285,715
	624,206	113,863	-	738,069	940,799
Term loans, prime rate plus 0.5% (6.75%)					
Deferred contributions	4,981	3,800,402		3,805,383	214,285
	629,187	3,914,265	-	4,543,452	4,561,987
FUND BALANCE					
Capital assets investments		3,172,331		3,172,331	3,272,772
Restricted contributions					
Internal source		16,549		16,549	56,435
External source			4,171	4,171	
Non-restricted contributions	837,417			837,417	600,250
	837,417	3,188,880	4,171	4,030,468	3,929,457
	1,466,604	7,103,145	4,171	8,573,920	8,491,444

Where the money comes from (tab.1)



Where the money goes (tab.2)



(tab.1)

Individual donations	39.0%	\$2,155,075
Deferred contributions	9.5%	\$528,581
Lodges	24.8%	\$1,367,341
Fundraising activities	7.8%	\$430,100
In memoriam donations	7.8%	\$428,251
Bequests	5.2%	\$289,442
Corporations	5.4%	\$300,618
Foundations	0.2%	\$9,000
Other	0.3%	\$15,296
Total	100.0%	\$5,523,704

The total revenues of \$ 5,523,704 for 2007–2008 include a deferred contribution of \$ 398,480, which will be attributed to the revenues of the next fiscal years.

(tab.2)

Lodges	43.0%	\$2,135,138
Information, education, awareness programs	20.3%	\$1,011,077
Solicitation, direct mailings, fundraising	14.1%	\$703,952
Documentation Centre, Info-Cancer Line, Telephone Peer Support Program	10.0%	\$495,881
Fundraising activities and development	7.7%	\$384,283
Administration	4.9%	\$244,709
Total	100.0%	\$4,975,040

A gesture for life

The Foundation would like to acknowledge the generous support of its donors through its donor recognition program. This program is based on a buddy system and highlights both the stages a person with cancer must go through and the ongoing backing of our donors.

The following categories reflect cumulative donations received by

the Quebec Cancer Foundation.

Elders' Circle \$100,000 and over

Anonyme [Chevaliers de Colomb du Québec](#) Succession Paul Venditti [Ministère de la Santé et des Services sociaux](#) Succession Fernand Giguère [Fondation Norman Fortier](#) Succession Marguerite Desmarais Guillemette [Fondation du Centre de santé et des services sociaux de Gatineau](#) Brault et Bouthillier Itée [Fondation J.A. DeSève](#) Finances Québec [Fondation Molson](#) UAP/Napa inc. [Janssen-Ortho inc.](#) Succession Jean-Paul Geoffrion [Succession Céline Du Paul](#) Banque Nationale du Canada [BNP Paribas Private Bank \(Switzerland\) SA](#) Succession Stella Corcoran [Succession Madeleine Lesage](#) Succession Hélène McNaulty [Fonds des employés de Bell Canada](#) [Fondation du Centre hospitalier régional de Trois-Rivières](#) [Familiprix inc.](#) Succession René Gignac [Succession Fedora Giroux Beaudoin](#) [Fondation J. Armand Bombardier](#) [Proxim](#) [Fondation Céline Dion](#) [Succession Pierre Gignac](#)

Mentors' Circle \$50,000 – \$99,999

Anonyme [Fédération des producteurs de lait du Québec](#) Succession Pauline Houle Bergeron [Hydro-Québec](#) Succession Marcelle Guy [Succession Adrien Godfrind](#) Succession Lise Desrochers [Succession Georges Chouinard](#) CFOM 102,9 [Fondation Paul A. Fournier](#) Monsieur Gilbert Ouellette [Bristol Myers Squibb Canada inc.](#) [Fondation Armand Martel](#) [Madame Lorraine Vézina](#) Succession Charles Auguste Leclair [Succession Cécile Pilon](#) Succession Germaine Gravel [Fonds de charité des employés et retraités de la CUM](#) [Fondation Adolphe et Roger Ducharme](#) [Succession Lucile Chenard](#) Succession Robert Simon Laporte [Sûreté du Québec, district de l'Outaouais](#) [Transcontinental inc.](#)

Masters' Circle \$25,000 – \$49,999

Anonyme [Succession Thérèse Tremblay Côté](#) [Tuyauteries Gicleurs Trois-Rivières](#) [Paquette & Associés](#) Succession Victor Racine [Madame Gabrielle Girouard](#) Succession

Cyrille Demers [Succession Carmen Turgeon](#) Les Placements Jean-Paul Auclair inc. [Succession Simone Lavoie](#) Les Œuvres Hedwidge Buisson inc. [Pharmacia & Upjohn](#) Succession Simone Desjardins [Succession Cécile Côté Rousseau](#) Succession Jeanne D'Arc Bouchard [Laflamme, Portes et Fenêtres](#) Succession Ida Tremblay [Astra Zeneca Canada inc.](#) Fédération des caisses populaires Desjardins du Québec [Fondation de bienfaisance T. A. Saint-Germain](#) Le Fonds de solidarité FTQ [Succession Louissette Deschênes](#) Fondation GlaxoSmithKlein [Les Agences Robert Janvier Itée](#) Construction APS 2000 inc. [Fonds de bienfaisance des employés Johnson & Johnson](#) La Fondation Brujavin [Raymond Chabot Grant Thornton, S.E.N.C.R.L.](#) Quebecor inc. [Clarica Maxmédia inc.](#) [RBC Banque Royale du Canada](#) Succession Cécile Audet Hogan [Succession Pauline De Villiers](#) Le Carrefour Longueuil inc. [Provigo Edelman Canada](#) [Res-to-Casino Hôtellerie et Restauration](#) Succession Desmond Findlay [Succession Gilles Fréchette](#) Succession Louis-Philippe Blouin [Classique des Amis](#) Ginsberg, Gingras & Associés [Succession Jacques Leduc](#) Succession Maire-Paul Audet Lambert [Succession Madeleine Jutras](#)

***Insiders' Circle* \$10,000 – \$24,999**

Anonyme [CGI inc.](#) Succession Madeleine Larocque [ACVRQ](#) Monsieur Henri Côté [Xemplar inc.](#) [FOCE](#) Succession [Marie-Denise Denis](#) Loto-Québec [Les Entreprises Électriques Charmau inc.](#) Succession Madeleine Hériteau [Glaxo Wellcome inc.](#) Succession Michelle Ducharme [Banque Laurentienne du Canada](#) Monsieur Frank Ferlaino [Succession Julienne Noël](#) Succession Berthe Legault Martel [Monsieur Jérôme Hogue](#) Radio-oncologues associés du CHUM [Sun Life du Canada](#) Succession Jeannine Chénard [J.P. Lessard Canada inc.](#) Succession Adrien Charbonneau [Succession Claire Roy Bessette](#) Succession William J. Burns [Corporation Cott S.T.T.](#) Brasserie Labatt (CSN) [Métro Richelieu inc.](#) Le Groupe Master S.E.C. [Groupe Teknika inc.](#) Power Corporation du Canada [Succession Édith Dion](#) BCE Emergis inc. [Zeneca Pharma inc.](#) Stikeman Elliot [Madame Yvette Chouinard](#) Monsieur Tim H. Dunn [Sears Canada inc.](#) Astral Radio inc. [Agropur](#) Madame Alice Sévigny [Madame Yvonne Goudreau](#) La Fondation du Sherbrooke Hospital [Monsieur Bernard Lamarre](#) Centraide Canada - United Way of Canada [Succession Françoise Flynn Simard](#) Fondation RBC [La Fondation de bienfaisance des brasseries Molson](#) Plomberie Robinson [Succession J.F. Adrien Demers](#) Banque de développement du Canada [Merck Frosst Canada Itée](#) Succession Marie-France Cheutin [Jean Brouillard](#) Communication et relations publiques CHRC 80 [Madame Édith Gauthier](#) Madame Jeannette Sansoucy [Omnium Marcel Brown](#) Les Constructions Beauce Atlas inc. [Succession Réal Bergeron](#) Imprimerie Québécois inc. [Caisse populaire du Quartier Latin de Montréal](#) Imperial Tobacco Canada Itée [Fonds de bienfaisance des employés d'OA](#) Monsieur Charles Laurendeau [Succession Marie-Anne Mercier](#) Acoustique de l'Estrie inc. [Succession Emma Duquette](#) Bell Canada [Téléystème Itée](#) Caisse de dépôt et placement du Québec [Monsieur François Sénécal Tremblay](#) Monsieur Michel Lemieux [Fondation Émile Jauron](#) Bell Mobilité [Fondation Martineau Drapeau](#) Editions De Villers inc. [CSSS de Gatineau](#) Fonds des employés IBM [Corus Entertainment inc.](#) Succession Germaine Binette [Les Soeurs du Bon-Pasteur de Qué-](#)

bec Ivanhoé Cambridge inc. [Collins & Aikman Canada inc.](#) Monsieur André Brodeur [Monsieur Claude Desmeules](#) Gouvernement du Québec [Heenan Blaikie](#) Gestion Jean-Paul Auclair inc. [La Coop Fédérée](#) Madame Judith Mappin [Cosmair Canada inc.](#) Fiducie Lionel Duval [Les Œuvres caritatives des Filles de Jésus](#) Le Groupe Jean Coutu (PJC) inc. [Fonds de charité de la Banque de Montréal](#) Aéroport de Montréal [Classique Yvon Martin](#) YC Productions (6916449 Canada) inc. [Fondation de bienfaisance des employés de BMO](#) Tac Tic Direct inc. [Fondation du Centre hospitalier universitaire de Sherbrooke](#) SITQ Immobilier [Madame Simone Perreault](#) Fidelity Investments Canada Itée [Monsieur Bernier](#) La Société de Gestion Berthelac inc. [Fondation Gilberte et Benoît Benoît](#) Madame Marie-Paule Paulin [Beaudin Le Prohon inc.](#) Monsieur Jean Neveu [Constructions Écho inc.](#) Monsieur Claude Chartier [Monsieur Paul Leduc](#) Monsieur Stephan Hawran [Multi-Énergie Best inc.](#) Services industriels J.P. Marcouillier inc. [Succession Amélie Grenier](#) Succession Dorothy Derochie [Succession Gabriel Bessette](#) Succession Margaret Swanson [Succession Marie-Rose Bigras](#) Succession Mary-Laure Van Ysendick Fraikin [Succession Thérèse Turgeon](#) William Grant & Son's [Banque Royale du Canada](#) Fonds de bienfaisance des employés d'Oerlikon [Les publications Télémedia](#) [Hachette](#) Succession Marcelle Bregent Ryan [Succession Rachel Demers](#) [Chartier](#) Time ICR [Aérospatiale](#) Ameublement Trifluviens [Architecture + Design](#) Association canadienne des véhicules récréatifs du Québec [BPB Brunet](#) [Delta Faucet Canada](#) Fortin, Corrieveau, Salvail, architectes [FTQ-Outaouais](#) Healthcare Businesswomen's [Le Groupe The Force](#) Les Breuvages Cott Canada [Monsieur Jean-Guy Hubert](#) Resisto (Soprema) [Stelpro](#) Succession Antoinette Bernier [Succession Eva Goyette](#) Succession Germain Bigras Lavoie [Succession Lucienne Rochette](#) [Lavallée](#) Tournoi de golf Fernande Sirois

Directors' Circle \$5,000 – \$9,999

Anonyme [Madame Henriette Cormier](#) Domco/Tarkett inc. [GlaxoSmithKline inc.](#) Succession Marie-Adeste Martin [Monsieur Gilles Lacourse](#) Société des alcools du Québec [Fonds SRS - Établ. de détention de Montréal](#) Madame Louise Lamarre [Succession Abbé Jules Paradis](#) Groupe Canam inc. [Madame Annick Gauvreau](#) Monsieur Claude Grefford [Monsieur Louis Carrière](#) Monsieur Gilles Therrien [Abek inc.](#) Ville de Trois-Rivières [TELUS](#) Les fromages Saputo Itée [SNC-Lavalin inc.](#) Vif Communications [Madame Estelle St-Jean](#) Construction Novex [Madame Gertrude Lessard](#) Madame Thérèse Gaudreault [Fédération de la santé et des services sociaux \(CSN\)](#) Succession Pierrette Dufresne [Caisse Populaire St-Stanislas](#) Groupe Permacon inc. [Monsieur Normand Parisella](#) Wawanesa Assurances [Madame Madeleine P. Pelland](#) La maison AMICO (1981) inc. [Gazoduc TQM](#) Ortho Biotech [Succession Jeannine Vignola](#) Monsieur René Coulombe [Madame Jacqueline Ouellet](#) Monsieur Michel Gélinas [Saldutti Capital Management L.P.](#) Sabex inc. [Monsieur Jean Fontaine](#) Monsieur Réal St-Jean [Madame Françoise Dumont](#) Cogeco inc. [Monsieur Guy Véronneau](#) Samson Bélair / Deloitte & Touche S.E.N.C.R.L [Fondation Banque Laurentienne](#) Monsieur Louis-Philippe Blouin [Maçonnerie L.N. Beaudoin inc.](#) BMO Nesbitt Burns [Madame Marguerite Desaulniers](#)

HUB International Québec Itée [Monsieur Henri Dubuc](#) Monsieur Pierre Schmidt [Construction Opéra inc.](#) Madame Colette Leblanc [Monsieur Pierre-Gabriel Jobin](#) Monsieur Denis Piché [Standard Life Suisse de Réassurance Vie Canada](#) [BMO Fontaine d'Espoir](#) Petrie Raymond, CA [Travaux publics et Services gouvernementaux Canada](#) Monsieur Lucien Farley [Monsieur Yvon Deschamps](#) Madame Marguerite Gaudreault [Société Radio-Canada](#) Association des gens d'affaires de Blainville inc. [Bombardier inc.](#) Monsieur P. Maynard [Industrielle Alliance](#) Madame Suzanne Bertin [Monsieur Gérard Desjardins](#) Monsieur Robert Gagnon [Succession Roger Dufort](#) Pharmascience inc. [Alcan inc.](#) Monsieur Jacques Major [Shire BioChem inc.](#) Monsieur Jacques Laparé [Gaz Métro Pratt & Whitney Canada](#) [Centre Financier aux Entreprises](#) [Centre Montréal](#) Monsieur Germain Benoît [Monsieur Yvon Robichaud](#) Garde Paroissiale St-Isaac Jogues d'Asbestos inc. [Société de Portefeuille Kinesis Inc.](#) Groupe Transcontinental [Madame Claudette Tradounsky](#) Monsieur Alain Mérand [Produits Nacan Itée](#) Succession Dolores Mathieu [Madame Nicole Bouchard](#) Madame Suzanne Girard [Monsieur Pierre Jones](#) Monsieur René Trudel [Monsieur Sylvain Massé](#) Novartis Pharma Canada inc. [Groupe Cossette Communication inc.](#) Groupe TVA inc. [Beaucher Électricité inc.](#) Capital Fire Protection [Fiducie de Charité](#) Maçonnerie Grues Desrosiers inc. [Madame Suzanne De Grandpré](#) Monsieur Étienne Vendette [Succession Alcide Descarreaux](#) Monsieur André Bigras J. O. Dufour Itée Vitrierie J. O. Dufour Itée [Madame Mariette Laramée M.E. 2000 inc.](#) [University Radiotherapy Associates](#) Monsieur Réal Halde [Succession Mariette Deschênes](#) Dufour, Mottet, Avocats [Assemblée Nationale Québec](#) Vannes & Raccords Laurentien [Madame Émilienne Chouinard](#) Desjardins Ducharme Avocats [Madame Rachel Desjardins](#) Monsieur Gerardo De Lucia [Fraser Milner Casgrain LLP/S.E.N.C.R.L](#) Production Casablanca inc. [Succession Rose Page](#) Docteur Pierre Daloz [Logistec Arrimage inc.](#) Madame Johanne Gagnon [Monsieur Paul-André Fecteau](#) Madame Lorraine Drouin Chassy [Monsieur Bernard Dubost](#) Société générale de financement [Fairmont Le Reine Élizabeth](#) Monsieur Denis Couture [Les Éditions Jules Châtelain inc.](#) Les Gestions Consilmo inc [Hôpital Notre-Dame](#) Monsieur Jacques Larose [Placements Erablys inc.](#) Monsieur Jean Mayer [Monsieur Ross Hunt](#) Maison provinciale des Ursulines [Unibord Canada inc.](#) Chambre de Commerce du Québec [Monsieur Richard Michaud](#) Madame Huguette Lessard [Club Espanol de Québec](#) Madame Pauline Tremblay [Monsieur Pierre Leblanc](#) Cascades technologies inc. [Avon Canada inc.](#) Canadian Gaming Summit [Ecolomondo Corporation inc.](#) Filteau Belleau, Avocats [Fondation BBB](#) La Fondation Secours La Feuilleraie [La Journée Claude Charlebois](#) Madame Nathalie St-Amant [Monsieur Louis Lagassé](#) Sidé Acoustique inc. [Succession Cécile C. Gaudreau](#) Succession Cécile Côté Grégoire [Succession Gérard Burns](#) Succession Madeleine St-Hilaire [Succession Marcelle Goyette-Décary](#) Succession Marguerite-Marie Haguette [Succession Serge Lefebvre](#) CKAC Eli Lilly [Canada inc.](#) Succession J. Rodolphe La Haye inc. [Succession Manon Raby](#) Succession Roger Dupont [Monsieur Guy Lacroix](#) Schneider Canada [Monsieur Guy Bernier](#) Monsieur Jean Chalifour [Portes & Fenêtres Les Rivières](#) Succession Daniel Grégoire [Succession Edmond Bruneau](#) Succession Rolland Pommier [Laboratoires Shermont](#) Linen Chest [L'Oréal Canada](#) Madame Colette Doré [Monsieur Richard Filion](#) Madame Maryse Grenier

Board of Directors and Senior Management

Senior Management

Executive Vice-president

Mr. Daniel Cauchon

Director of Financial and Material Resources

Ms. Nicole Bergeron

Director of Development

Mr. Pierre-Claude Paré
(Until October 2008)

Director of Communications

Ms. Nancy Radford

Director of Operations – Montreal Regional Centre and Lodge

Mr. Pierre-Yves Gagnon

Director – Estrie Regional Centre and Lodge

Ms. Marie Toupin

Director – Outaouais Regional Centre

Ms. Corinne Lorman

Director – Mauricie Regional Centre

Ms. Luce Girard

Director – Quebec City Regional Centre

Ms. Élyse Létourneau (Until April 2008)

Board of Directors

Officers

President Dr. Michel Gélinas

Vice-President Dr. Lorraine Portelance

Treasurer Mr. René Goulet, CA

Secretary M^e André Bigras

Directors

Dr. Pierre Audet-Lapointe

M^e Michel Brunet

Mr. André Costin

M^e Yves Duceppe

Mr. Daniel Garant

Mr. Jean-Pierre Naud

Mr. Hubert Sacy

Dr. Philippe Sauthier



Addresses of the Quebec Cancer Foundation

Head Office

Montreal Regional Centre and Lodge

2075, Champlain Street
Montreal, Quebec H2L 2T1
Tel: 514-527-2194
Toll-free: 1-877-336-4443
Fax: 514-527-1943
cancerquebec.mtl@fqc.qc.ca

Quebec City Regional Centre

Info-Cancer Line, Telephone Peer
Support Program, Documentation Centre
190, Dorchester Street South, Suite 50
Quebec City, Quebec G1K 5Y9
Tel: 418-657-5334
Toll-free: 1-800-363-0063
Fax: 418-657-5921
cancerquebec.que@fqc.qc.ca

Estrie Regional Centre and Lodge

300, 12th Avenue North
Sherbrooke, Quebec J1H 5N4
Tel: 819-822-2125
Fax: 819-822-1392
cancerquebec.she@fqc.qc.ca

Mauricie Regional Centre and Lodge

3110, Louis-Pasteur Street
Trois-Rivières, Quebec G8Z 4E3
Tel: 819-693-4242
Fax: 819-693-4243
cancerquebec.tvr@fqc.qc.ca

Outaouais Regional Centre and Lodge

Michael J. McGivney Pavillon
555, De l'Hôpital Boulevard
Gatineau, Quebec J8V 3T4
Tel: 819-561-2262
Fax: 819-561-1727
cancerquebec.gat@fqc.qc.ca





Quebec
Cancer
Foundation

